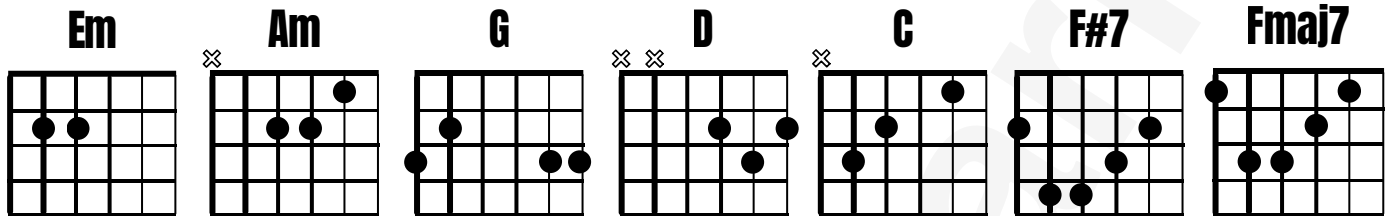
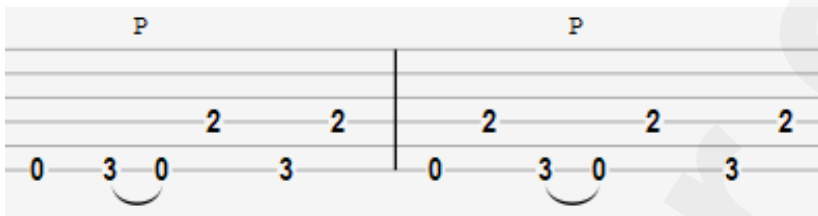


# Personal Jesus by Johnny Cash

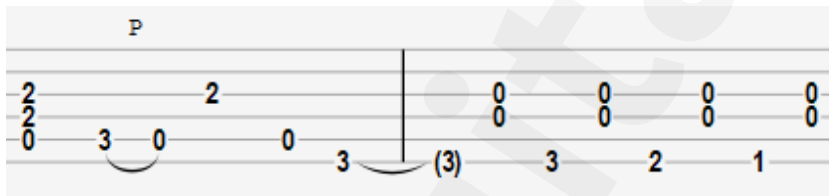
## chords



## main riff - Em



## extension - Am



## chord progression

**Intro/Breaks : Em riff**

**Chorus : Em riff x3 | Am riff x1**

**Verse 1/2: Em riff x 1 | G | D | Am | Em - C**

**Bridge: F#7 | Fmaj7 | Em riff x1**

**Verse 3 : Em riff x 1 | G | D | Am | Em - C | Em riff x1 | Am | Em - C**

**Outro : F#7 | Fmaj7 | Em riff x3  
F#7 | Fmaj7 | Em**

## song structure

**Intro > Chorus > Verse 1 > Verse 2 > Bridge > Chorus > Verse 3 > Outro**

## additional info

- Released 2002
- Time signature: 4/4
- To play all 6 strings for the F#7 and Fmaj7 - whilst keeping the top E string open at the same time - you will need to use your thumb to fret the low E. Alternatively don't play the low E or just play full bar chords without worrying about keeping the top E open.
- This song is originally by Depeche Mode and was released in 1990
- The Depeche Mode version is in the key of F#m. You can play it by using the riffs and chords above but with a capo on the 2<sup>nd</sup> fret.